

WINSTON TRAILS PARCEL EIGHTEEN

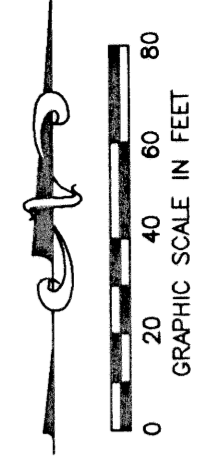
PART OF WINSTON TRAILS P.U.D.
BEING A REPLAT OF TRACT F,
"WINSTON TRAILS EAST"
(PB 85, PGS 74-78)

SITUATE IN SECTION 2, TOWNSHIP 45 SOUTH, RANGE 42 EAST
PALM BEACH COUNTY, FLORIDA
DECEMBER, 1998 SHEET 5 OF 6

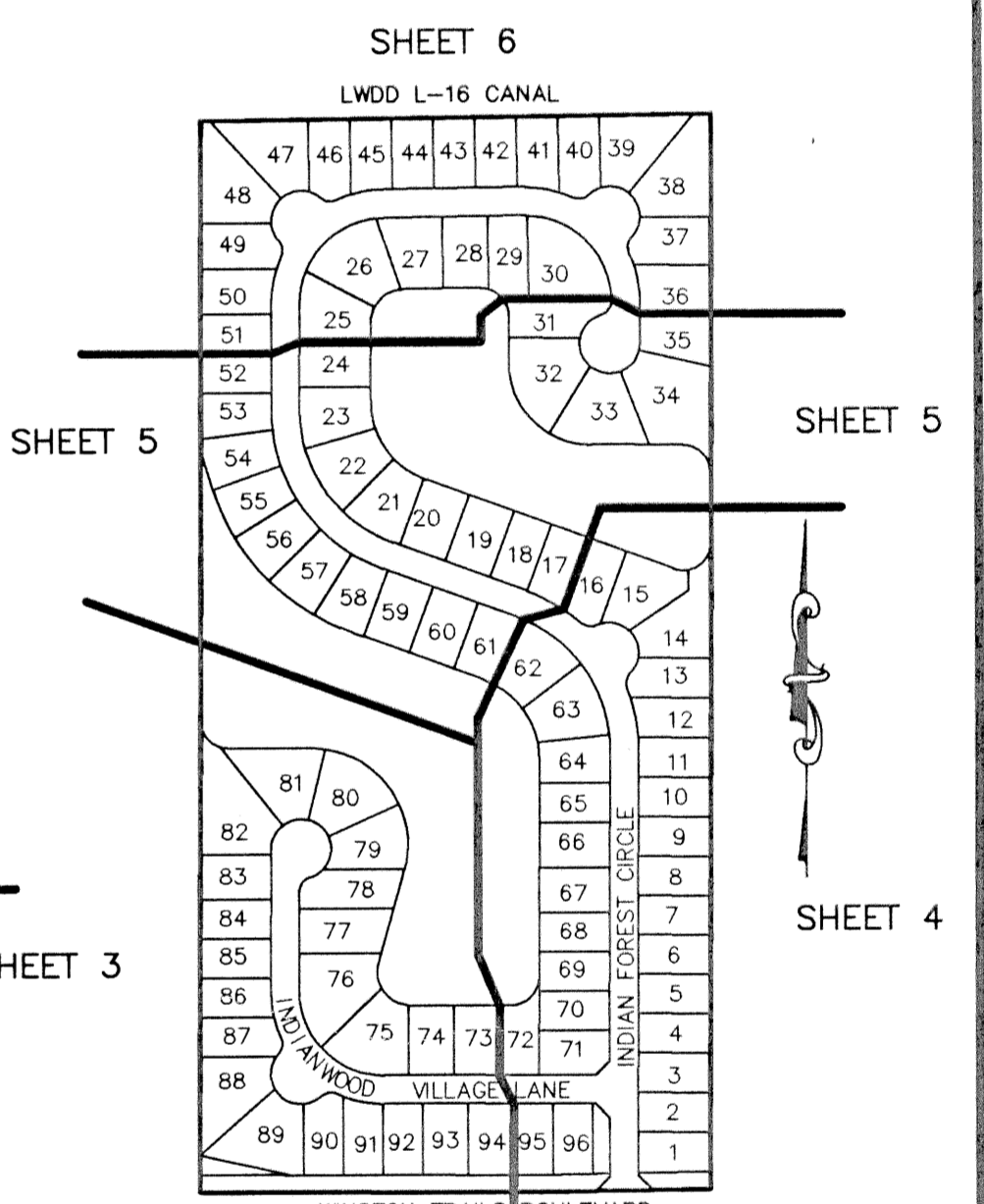
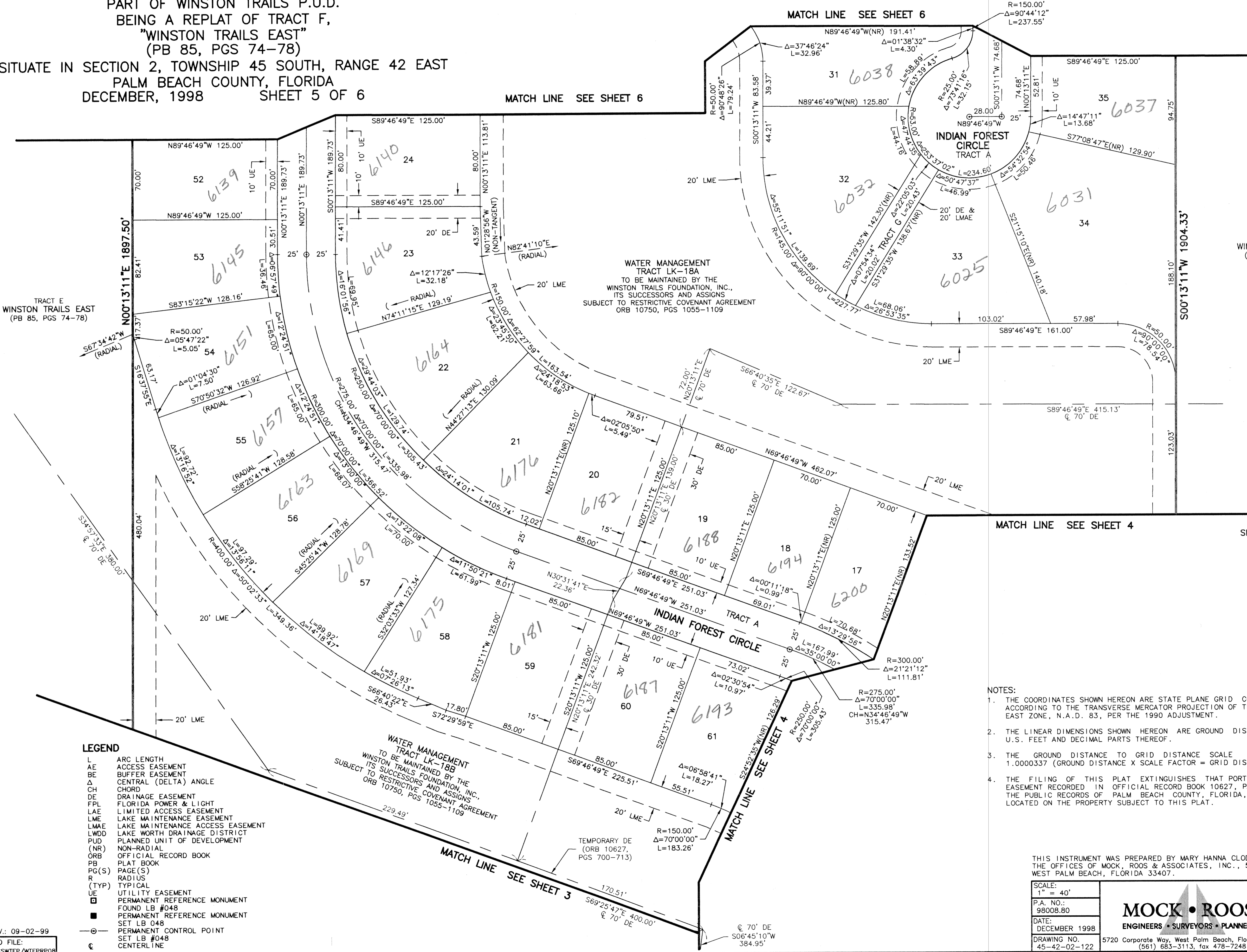
0387-027

46

STATE OF FLORIDA
COUNTY OF PALM BEACH
THIS PLAT WAS FILED FOR
RECORD _____ DAY OF _____
AD, 1999 AND DULY RECORDED
IN PLAT BOOK _____ ON PAGES
_____ AND _____
DOROTHY H. WILKEN, CLERK
BY: _____, D.C.



CIRCUIT COURT SEAL



SHEET LOCATION MAP
(NOT TO SCALE)

- NOTES:
1. THE COORDINATES SHOWN HEREON ARE STATE PLANE GRID COORDINATES ACCORDING TO THE TRANSVERSE MERCATOR PROJECTION OF THE FLORIDA EAST ZONE, N.A.D. 83, PER THE 1990 ADJUSTMENT.
 2. THE LINEAR DIMENSIONS SHOWN HEREON ARE GROUND DISTANCES IN U.S. FEET AND DECIMAL PARTS THEREOF.
 3. THE GROUND DISTANCE TO GRID DISTANCE SCALE FACTOR IS 1.0000337 (GROUND DISTANCE X SCALE FACTOR = GRID DISTANCE).
 4. THE FILING OF THIS PLAT EXTINGUISHES THAT PORTION OF THE EASEMENT RECORDED IN OFFICIAL RECORD BOOK 10627, PAGE 700 OF THE PUBLIC RECORDS OF PALM BEACH COUNTY, FLORIDA, WHICH IS LOCATED ON THE PROPERTY SUBJECT TO THIS PLAT.

LEGEND

L	ARC LENGTH
AE	ACCESS EASEMENT
BE	BUFFER EASEMENT
Δ	CENTRAL (DELTA) ANGLE
CH	CHORD
DE	DRAINAGE EASEMENT
FPL	FLORIDA POWER & LIGHT
LAE	LIMITED ACCESS EASEMENT
LME	LAKE MAINTENANCE EASEMENT
LMAE	LAKE MAINTENANCE ACCESS EASEMENT
LWDD	LAKE WORTH DRAINAGE DISTRICT
PUD	PLANNED UNIT OF DEVELOPMENT
(NR)	NON-RADIAL
ORB	OFFICIAL RECORD BOOK
PB	PLAT BOOK
PG(S)	PAGE(S)
R	RADIUS
(TYP)	TYPICAL
UE	UTILITY EASEMENT
□	PERMANENT REFERENCE MONUMENT
■	FOUND LB #048
■	PERMANENT REFERENCE MONUMENT
○	SET LB #048
○	PERMANENT CONTROL POINT
○	SET LB #048
⊕	CENTERLINE

THIS INSTRUMENT WAS PREPARED BY MARY HANNA CLODFELTER, P.S.M. IN THE OFFICES OF MOCK, ROOS & ASSOCIATES, INC., 5720 CORPORATE WAY, WEST PALM BEACH, FLORIDA 33407.

SCALE:
1" = 40'

P.A. NO.:
98008.80

DATE:
DECEMBER 1998

DRAWING NO.
45-42-02-122

MOCK • ROOS
ENGINEERS • SURVEYORS • PLANNERS

5720 Corporate Way, West Palm Beach, Florida 33407
(561) 683-3113, fax 478-7248

WINSTON TRAILS
PARCEL EIGHTEEN
PART OF WINSTON TRAILS P.U.D.
BEING A REPLAT OF TRACT F,
"WINSTON TRAILS EAST"
(PB 85, PGS 74-78)
SECTION 2, TOWNSHIP 45 SOUTH, RANGE 42 EAST
PALM BEACH COUNTY, FLORIDA

Winston Trails Parcel 18
PAGE 410
BLOODMAP # 1756
ZONING RS-15E
SE 87-112
TAX 436
PUB NAME Winston Trails

REV.: 09-02-99
CAD FILE: MUSSWTEP/WTEPRP08

SHEET 5 OF 6